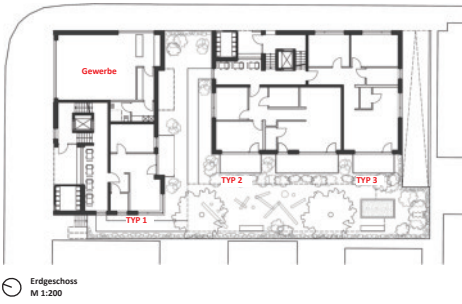


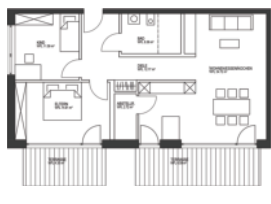
NEUBAU IN ULM - KARLSTRASSE ECKE SYRLINSTRASSE



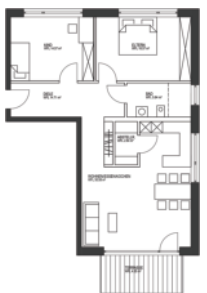
Erdgeschoss
M 1:200



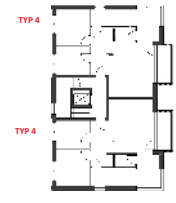
Typ 1
2-Zi.-Whg.
Wohnfläche: 46,94m²
M 1:100



Typ 2
3-Zi.-Whg.
Wohnfläche: 93,43m²
M 1:100



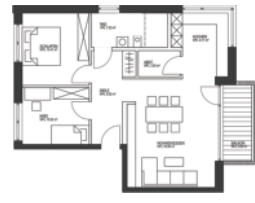
Typ 3
3-Zi.-Whg.
Wohnfläche: 89,26m²
M 1:100



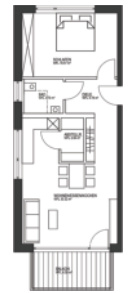
Typ 4
3-Zi.-Whg.
Wohnfläche: 82,18m²
M 1:200



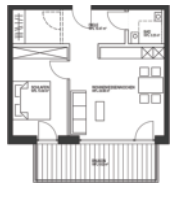
Typ 5
2-Zi.-Whg.
Wohnfläche: 62,31m²
M 1:100



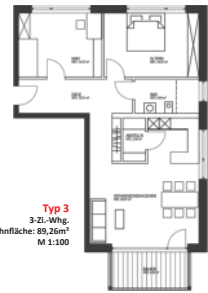
Typ 4
3-Zi.-Whg.
Wohnfläche: 82,18m²
M 1:100



Typ 5
2-Zi.-Whg.
Wohnfläche: 62,31m²
M 1:100



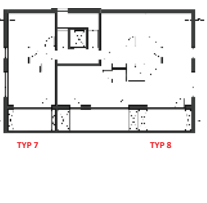
Typ 6
2-Zi.-Whg.
Wohnfläche: 57,79m²
M 1:100



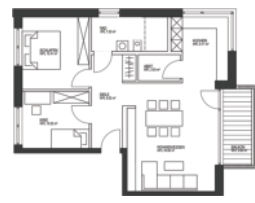
Typ 3
3-Zi.-Whg.
Wohnfläche: 89,26m²
M 1:100



Typ 4
3-Zi.-Whg.
Wohnfläche: 82,18m²
M 1:200



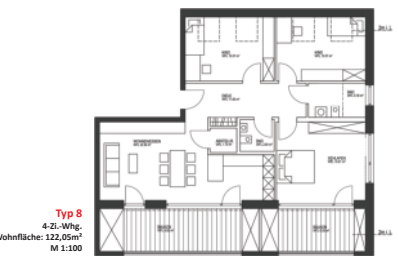
Typ 7
2-Zi.-Whg.
Wohnfläche: 52,44m²
M 1:100



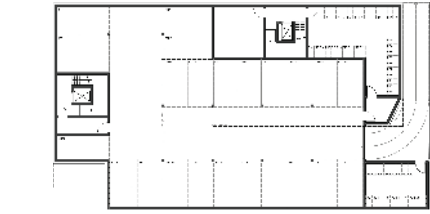
Typ 4
3-Zi.-Whg.
Wohnfläche: 82,18m²
M 1:100



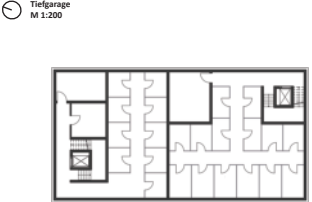
Typ 7
2-Zi.-Whg.
Wohnfläche: 52,44m²
M 1:100



Typ 8
4-Zi.-Whg.
Wohnfläche: 122,05m²
M 1:100

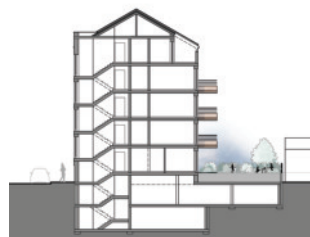


Dachgeschoss
M 1:200



Tiefgarage
M 1:200

2.UG
M 1:200



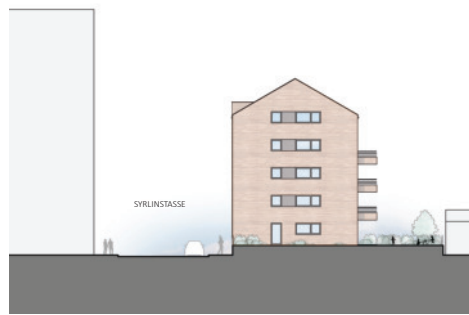
Schnitt Haus Syrlinstraße
M 1:200



Schnitt Haus Karlstraße
M 1:200



Nordansicht Haus Karlstraße
M 1:200



Nordansicht Haus Syrlinstraße
M 1:200



Westansicht
M 1:200